

SCENARIO DEFINITION AND SIMULATION OF URBAN AGRICULTURE IN DA NANG

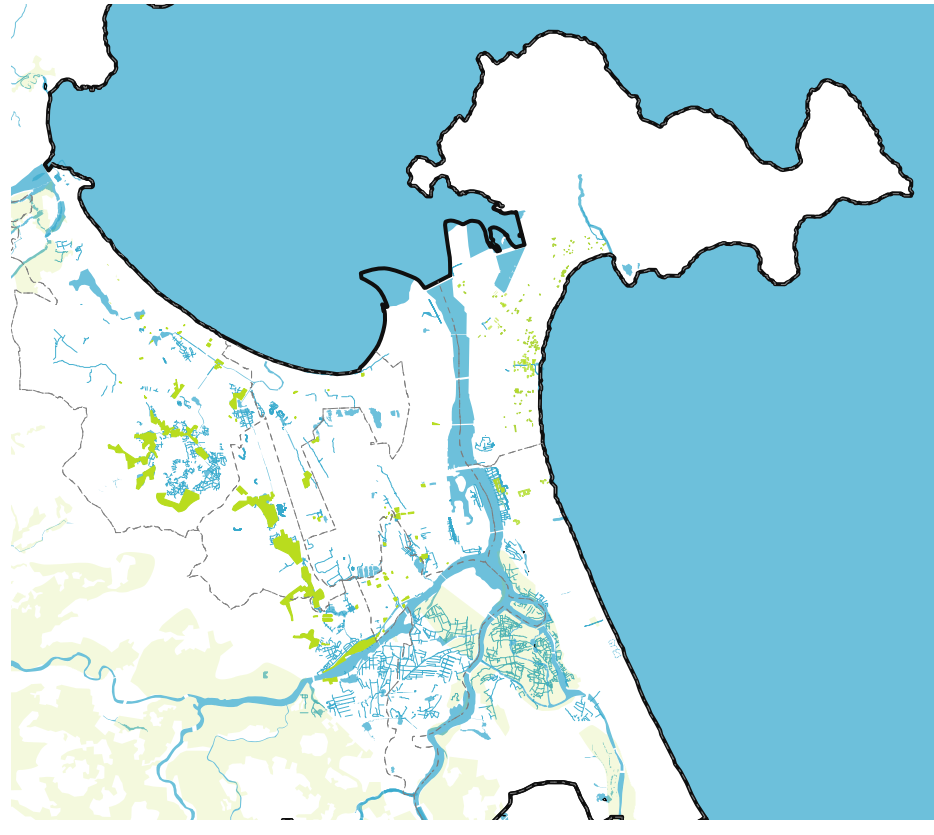
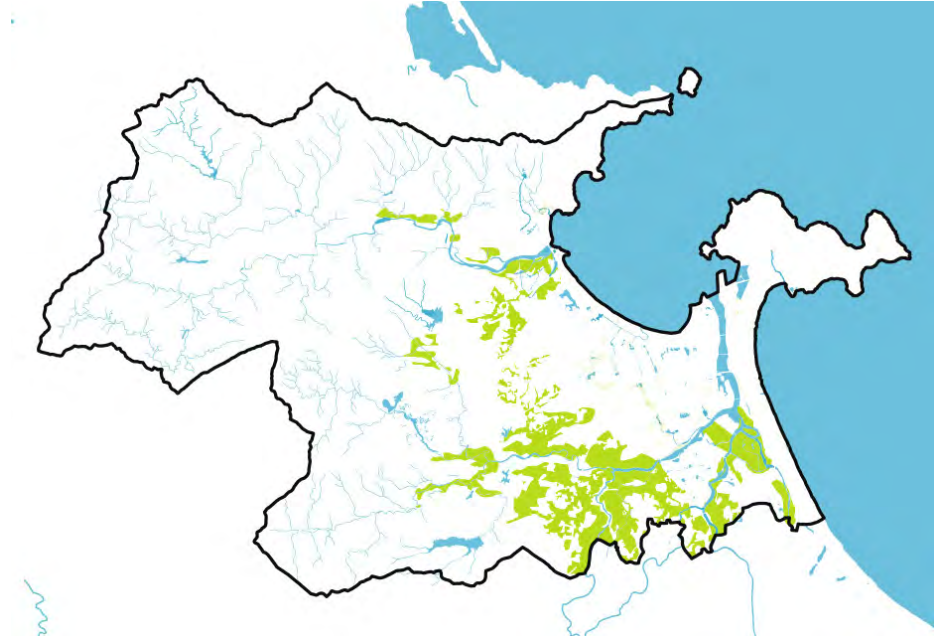
Base for discussion, scenario definition and simulation of urban agriculture in Da Nang

data for modelling and scenario simulation

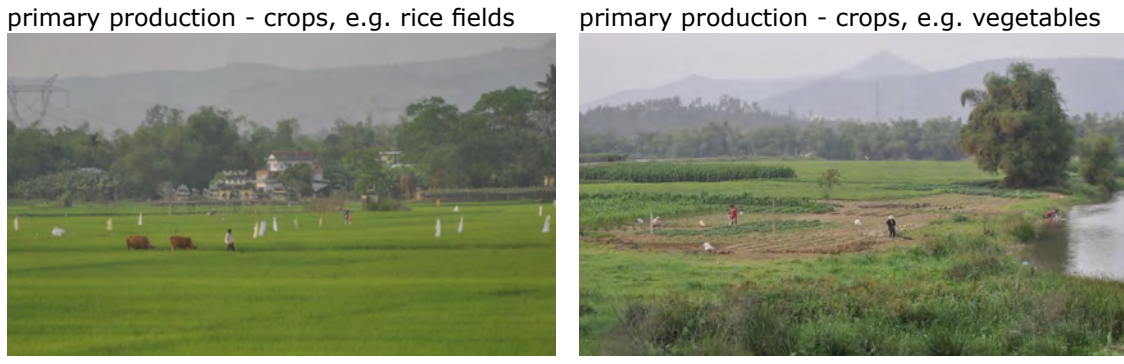
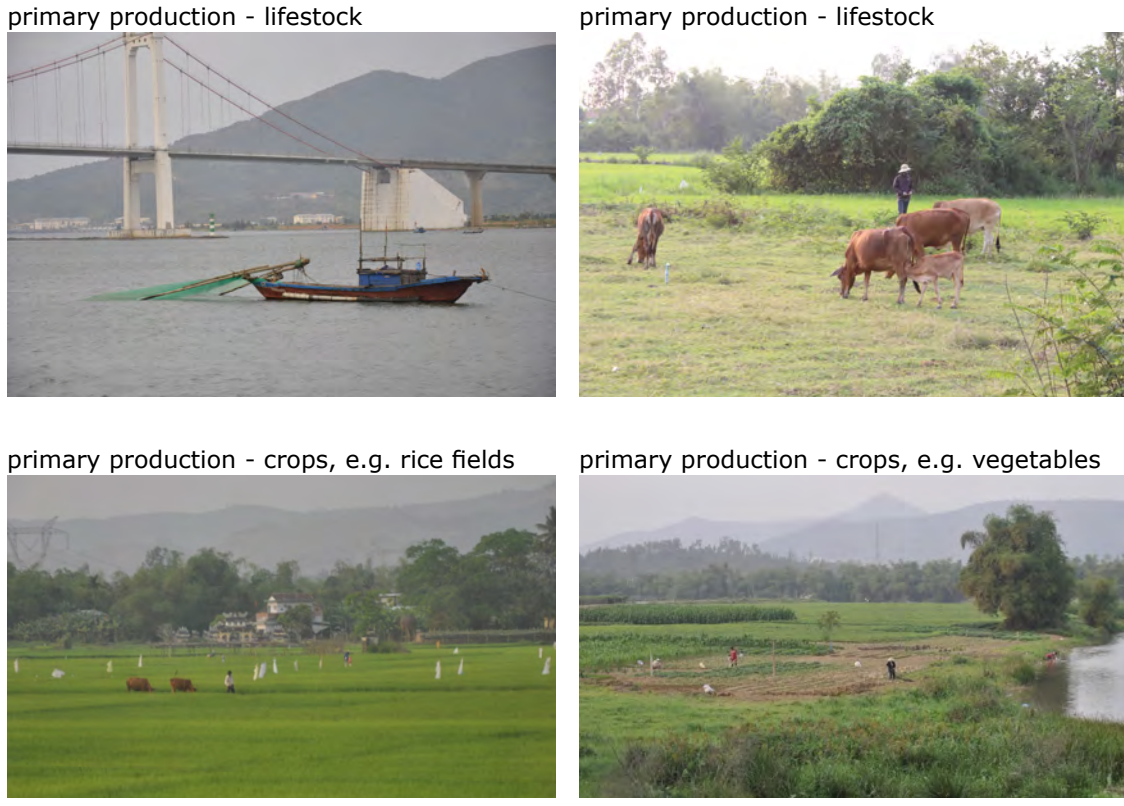
base				primary agriculture		research and definition of missing parameters in progress				
Cultivation method	type	ha	t/ha/a (yield)	water M3/ha/a		input			feeding	
				t/a	water	Fertilizer/ manure	feeding Kg/ha/a	urea		phosphate
				lifestock						
	Hunting		/	0	0	/	/	/	/	/
/	Animal keeping		6	1,615	9,690	/	/	/	/	/
	Animal keeping	dairy		22	131	/	/	/	/	/
	Fishing		/	/	34,173	/	/	/	/	/
	Aquaculture		470	1,72	807	/	/	/	/	/
crops										
irrigated 56%	Soil-bound agri-culture	cereals	5,757	6	33,785	4,000	114	60	59	/
	Soil-bound agri-culture	Vegetables and fruits (including herbs, pulses, and starchy roots)	428	19	8,080	6,500	97	77	100	/
	Soil-bound agri-culture in greenhouse		0		0	6,500	97	77	100	/
	Soil-bound agri-culture	beverage/ spice crop	151	2	234					/
	Soil-bound agri-culture	industrial crops	917	16	14,745	3000	0	0	0	/
rain fed 44%	Soil-bound agri-culture	cereals								/
	Soil-bound agri-culture	Vegetables and fruits (including herbs, pulses, and starchy roots)								/
	Soil-bound agri-culture	beverage/ spice crop								/
	Soil-bound agri-culture	industrial crops								/
	Soil-bound agri-culture									/
/	Agropark	meat	0	0						/
		dairy	0	0						/
		vegetables and fruits (etc.)	0	0						/

secondary agriculture									
base				input					
Cultivation method	type	ha	t/ha/a (yield)	water M3/ha/a		Fertilizer/ feeding Kg/ha/a			
				t/a	water	manure	urea	phosphate	potash
soil bound and soil bound and elevated	plots <1 ha								
	typologies: residential gardens and small scale on public space, cultivation in boxes, raised beds								
	plots 1 - 5 ha	75	~19	~1,425		6,500	97	77	100
	urban farming plots								
	typologies: including herbs, pulses, and starchy roots								
soil bound and elevated soil less	temporary 1-5 ha typology: fallow/ construction land								
	rooftops								
	Aeroponic/hy- dropnic								
soil less	Aquaponic								
	fish								

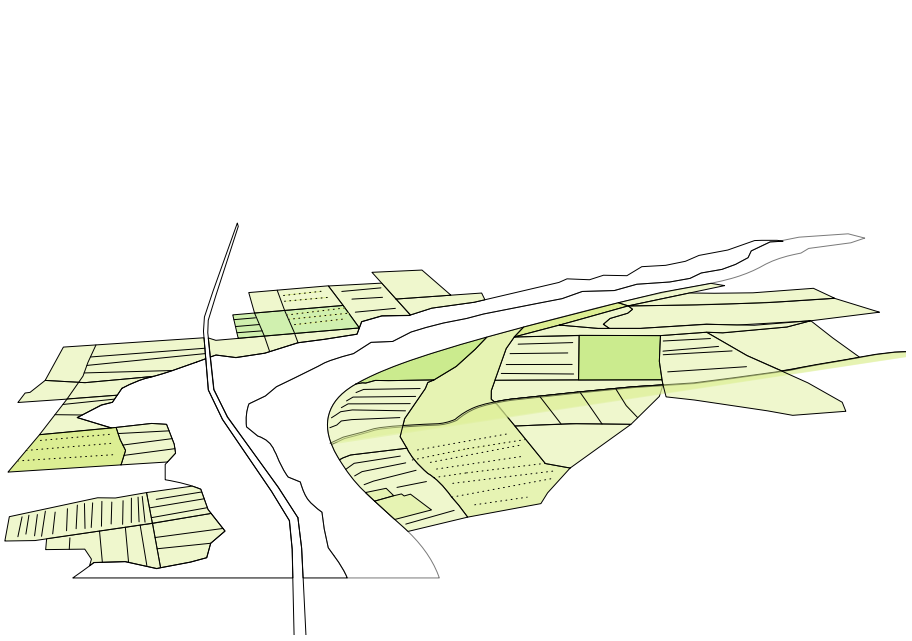
location



illustrating pictures, examples



depiction of spatial typology



mode of identification

remote sensing (Uni Tübingen) and official statistic data

all types below presumably not covered by official statistics



Specific types (varying input/output parameters)



amount of food for local supply

currently

9,690 tons meat, 131 tons dairy, 34,980 tons fish

14,745 tons industrial crops, 234 tons beverage/ spice crop

33,785 tons cereals, 8,080 tons vegetables and fruits (including herbs, pulses, and starchy roots)

1,425 tons Vegetables and fruits (including herbs, pulses, and starchy roots)

x tons Vegetables and fruits (including herbs, pulses, and starchy roots)

x tons Vegetables and fruits (including herbs, pulses, and starchy roots)

x tons Vegetables and fruits (including herbs, pulses, and starchy roots)

total supply of vegetables and fruits of all typologies

x tons % of local demand (WP 3.1)

to be discussed in scenario definition workshop